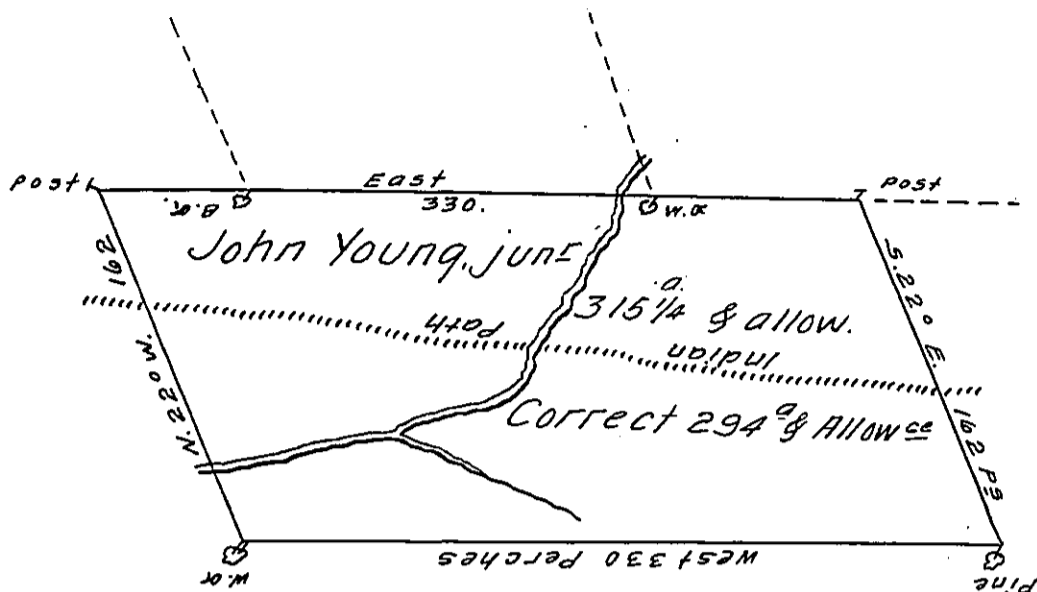


X



A Draught of a Tract of Land called "Young's Range" Situate on both Sides of the path leading from Nescopeck To Fort Allen about 2 miles from Nescopeck, including a small run in the County of Northumberland. Containing three hundred and fifteen Acres and a quarter of an Acre besides the usual allowance of 6 Cent for Roads &c Surveyed the 27 day of May 1774. In Pursuance of a Warrant dated the \*8<sup>th</sup> day of March 1774.

To \_\_\_\_\_ by Chas<sup>s</sup> Stewart D<sup>y</sup> Sur<sup>r</sup>

John Lukens Esq<sup>r</sup>

Survey<sup>r</sup> Gen<sup>l</sup>

\* say 28<sup>th</sup>

90	40
24	22
66	68

IN TESTIMONY that the above is a copy of the original remaining on file in the Department of Internal Affairs of Pennsylvania, made conformably to an Act of Assembly approved the 16th day of February, 1833, I have hereunto set my Hand and caused the Seal of said Department to be affixed at Harrisburg, this eighteenth day of January 1911.

*Henry Honck*  
Secretary of Internal Affairs.